

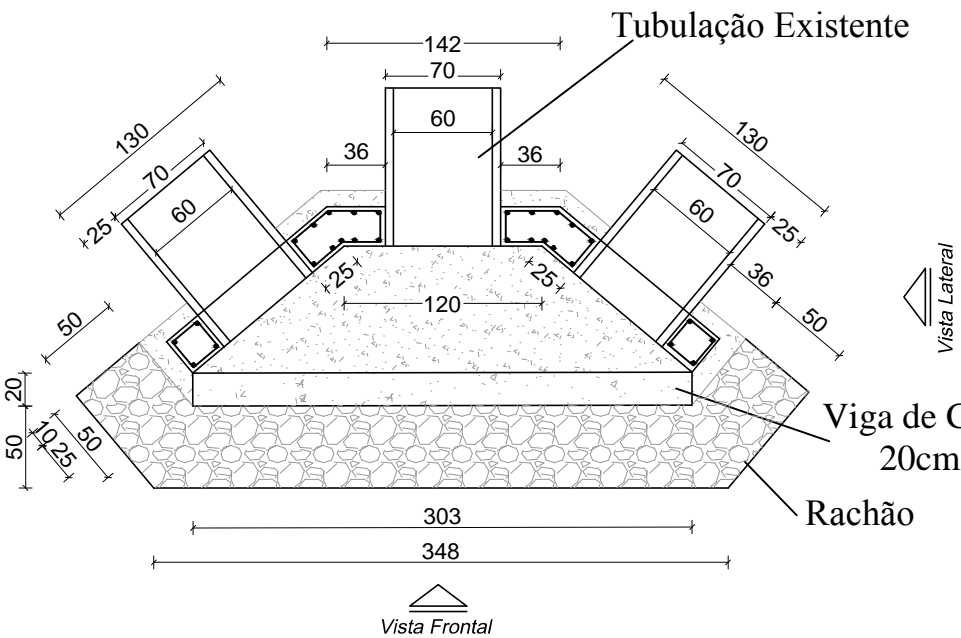
01

DETALHES

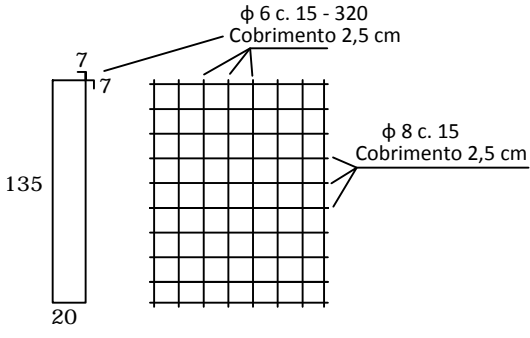
Sem Escala

DETALHE DA ALA EM CONCRETO ARMADO

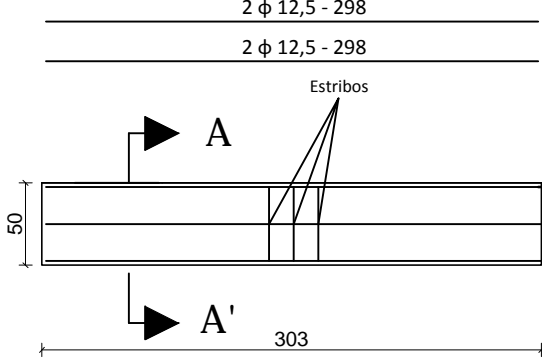
Medidas em cm



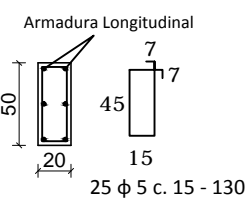
ARMADURA DAS PAREDES



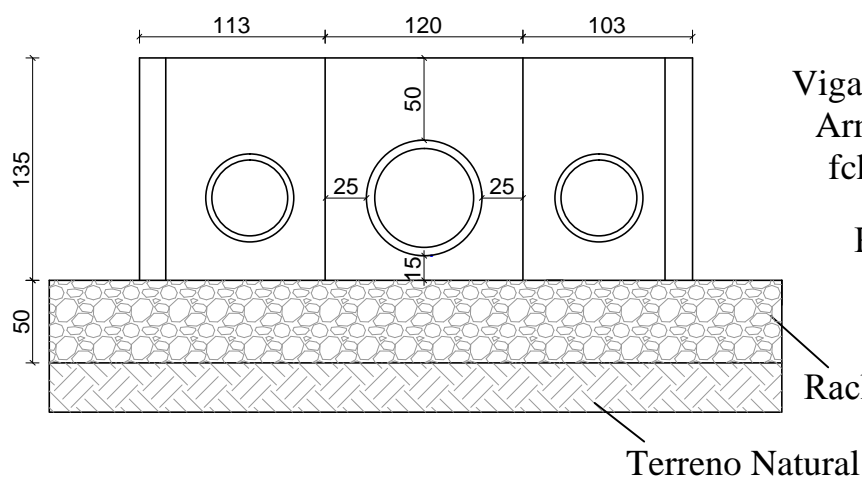
VIGA DA ALA (20x50)



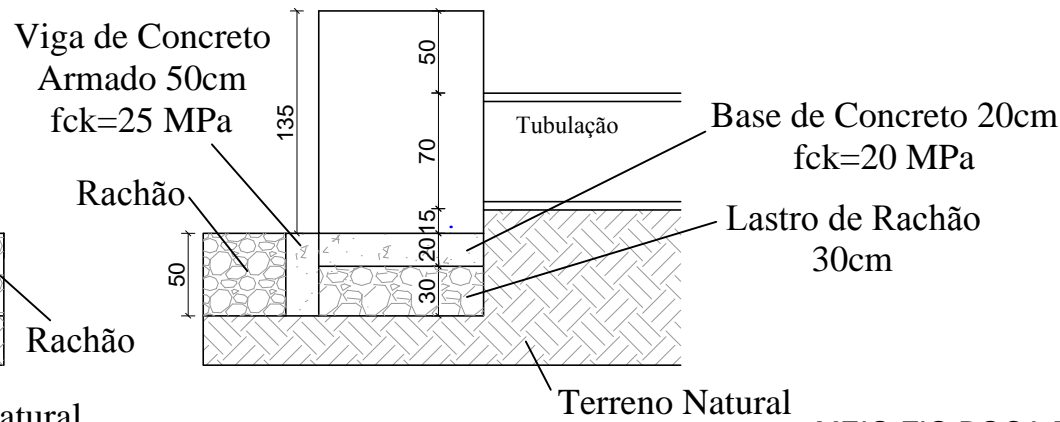
Corte AA'



Vista Frontal



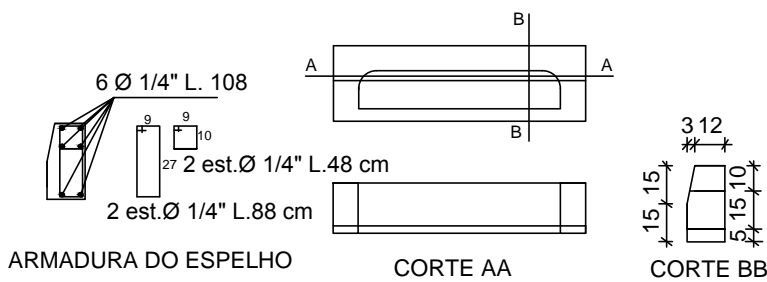
Vista Lateral



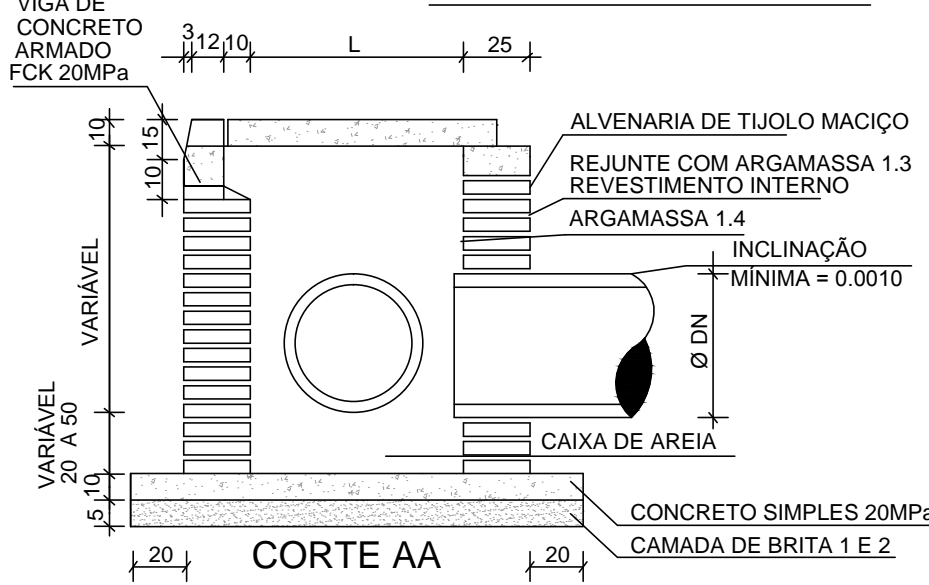
CAIXAS COM BOCA DE LOBO e POÇOS DE VISITA

TIPO	DN cm	DIMENSÕES TAMPA		DIMENSÕES INTERNAS DA CAIXA		ESPESURA DA BASE	DIMENSÕES DO FERRO 1/4"		Nº E ESPAÇAMENTO FERRO 1/4"	
		L (m)	C (m)	L I (m)	C I (m)		b (m)	POS I	POS II	POS I
BL1	Ø 40	1.05	1.10	0.80	0.80	0.10	1.02	1.07	7C. 15	7C. 15
BL2	Ø 60	1.30	1.10	1.00	0.80	0.10	1.27	1.07	8C. 15	7C. 15

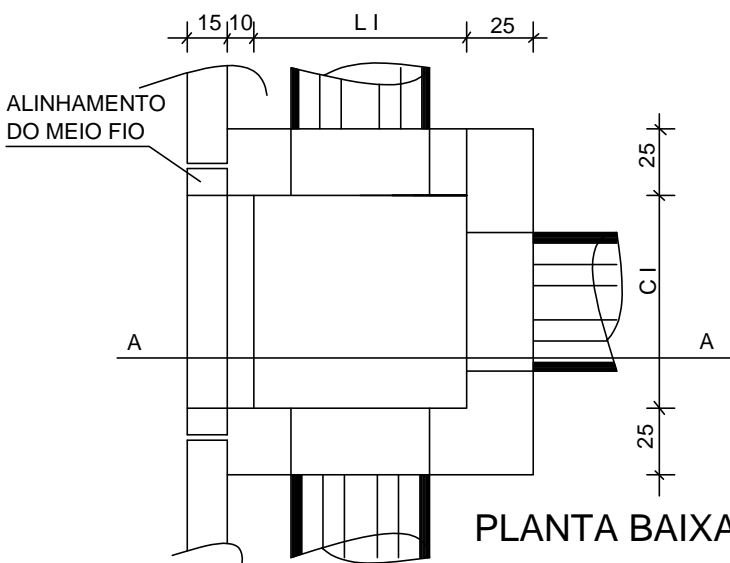
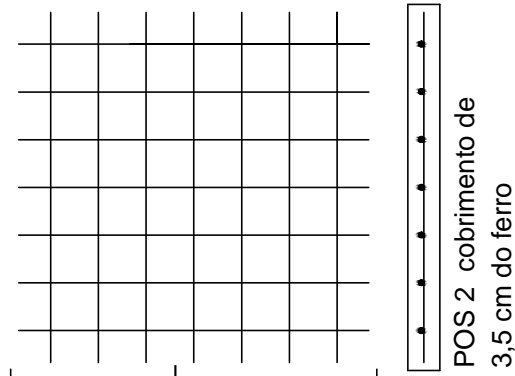
MEIO FIO BOCA DE LOBO



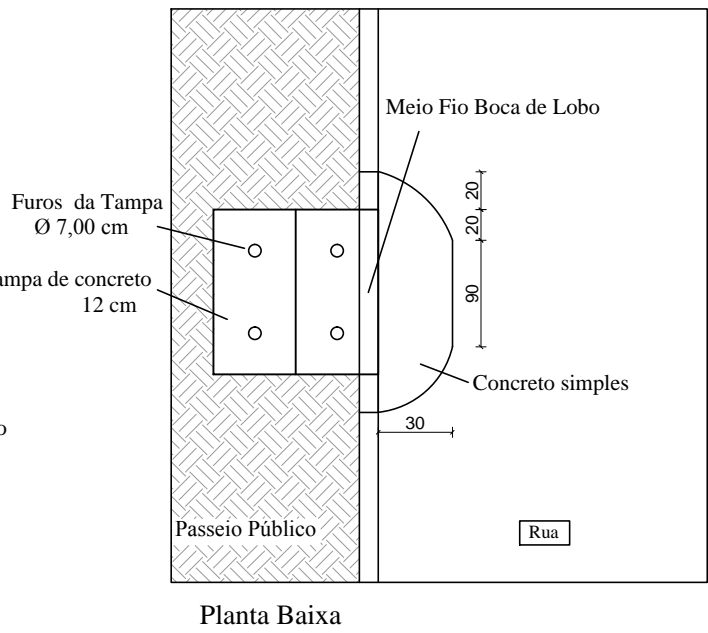
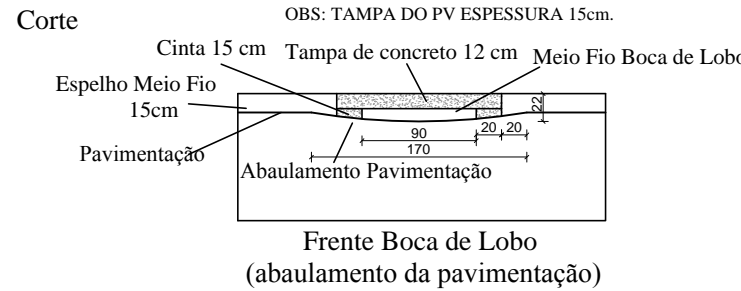
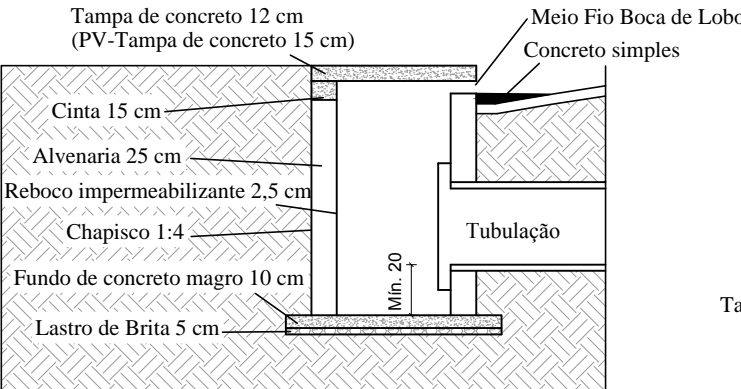
CAIXAS COM BOCA DE LOBO



ARMADURA DA TAMPA



DETALHE DAS CAIXAS COM BOCA DE LOBO



PREFEITURA MUNICIPAL DO RIO GRANDE
Gabinete de Programas e Projetos Especiais

Obra/Local:	Projeto de Pavimentação e Drenagem Rua São José do Norte		
Especificação:	Detalhes		
Equipe de Projeto:	Eng ^a Civil Suzel Magali Leite, CREA-RS: 39323 Eng ^a Civil Bárbara Lothamer Peixe, CREA-RS: 202828		
Coordenação de Projetos:	Eng ^a Civil Suzel Magali Leite, CREA-RS: 39323		
Chefe de Gabinete GPPE: Darlene Torrada Pereira			
Desenho:	Data:	Escala:	Prancha:
Bárbara Peixe	Julho/2019	Indicada	06/06